



# SLALEY FIRST SCHOOL

May/June  
2017

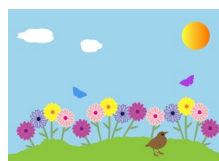
SummerTerm

## Message from the Headteacher:

Welcome back to another busy term at Slaley First School. We have a number of events and information evenings coming up so do keep a close eye on the Website Calendar. News items are also added regularly to the Home Page so please 'read all about it' and enjoy the photographs.

With warmer weather ahead (hopefully!) please could we ask that pupils bring a named waterbottle into school with them so that they have access to water whenever they need it. Also, could parents please check that all uniform and P.E. Kit is named.

As always, if you have any concerns or worries regarding your child's education at Slaley First School, please do not hesitate to contact the school either personally, or by phone or email.



## Extra Curricular Clubs

Clubs to get involved in this term are:

Tennis  
Multi-skills  
Netball

Our noticeboard is now here!



This has been generously provided by the owners of Slaley Hall.

## Forest School

All children from Nursery up to Year 4 will have an opportunity to learn in the outdoor environment of Forest School. The children will be making good use of the facilities at Slaley Forest thanks to the continued support of parents and the owners of Slaley Hall. Please let Mrs. Wilson know if you would like to help out and accompany the children on any of the sessions. Thank you.



## Praise Assembly—Mondays @2:55pm.

To celebrate the efforts of our pupils, each week three children from each class are nominated by their teacher to receive an award. We are also introducing an Effort Cup this term. This will be awarded to one pupil each week who has made an extra special effort in some way.

Parents, friends and family are invited to join with us in celebrating the children's achievements, it makes the assembly extra special!

Please see the website calendar for details.

## Notes from the Office:

- ⇒ Any absence needs to be communicated to the school office by 9:30am. You can visit, phone or email (details below).
- ⇒ Any changes to home time arrangements also needs to be communicated to the school office by lunchtime. Thank you.
- ⇒ Please can you regularly check your Parentmail account for communication from school. Any school closure due to adverse weather conditions will be communicated through text.
- ⇒ We would like to remind you that, if prescribed medication needs to be administered at school, an official form must be completed. You can find this form on the school's website, in the Parent Zone, or you can collect one from the office. Without this information we *can not* administer medication to your child.
- ⇒ School uniform and P.E. Kit available on line through School Trends—link in the Parent Zone of the website.

**Tel:** 01434 673220 **Email:** admin@slaley.northumberland.school.uk



## Dates for your diary:

### APRIL

24th April—School reopens for the children.

26th—28th April—Dukeshouse Wood Residential Trip (Y4).

### MAY

Key Stage 1 SATs.

4th May—Forest School Starts  
(EYFS—4 weeks)

16th May—FGB Meeting (5pm)

25th May—Yr1 Phonics  
Information Evening.

29th May—Half-term Break



### JUNE

5th June—School reopens

8th June—Forest School Starts  
(Ks1/2—4 weeks)

11th June—Hexhamshire Leek Club Barbecue (Sunday)

12th June—Yr1 Phonics Screening Week.

26th June—Swimming Gala

29th June—6pm Transition Evening (R—Yr4)



### JULY

4th July—Transfer Day

6th July—Sports Day

14th July—Reports out to parents

18th July—Yr4 Leavers' Assembly  
(9:15—10:15am)

20th July—Summer Fair

21st July—School finishes

**All dates are on the website calendar.**

**Further information will be sent nearer the time.**

