



SLALEY FIRST SCHOOL

June/July
2017

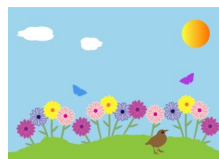
SummerTerm

Message from the Headteacher:

Welcome back to another busy half-term at Slaley First School. We have a number of events and information evenings coming up so do keep a close eye on the Website Calendar. News items are also added regularly to the Home Page so please 'read all about it' and enjoy the photographs.

With warmer weather ahead (hopefully!) please could we ask that pupils bring a named waterbottle into school with them so that they have access to water whenever they need it. Also, could parents please check that all uniform and P.E. Kit is named.

As always, if you have any concerns or worries regarding your child's education at Slaley First School, please do not hesitate to contact the school either personally, or by phone or email.



Nursery Teddy Bears' Picnic: 12:00-1:00pm—Wednesday, 28th June

A chance for new parents and carers to meet and chat whilst their children enjoy a packed lunch in our newly extended Early Years Area.

We hope you can join us; we will be hoping for a nice, sunny day!



Summer Fair/Community Event: 3:30—5:30pm on Thursday, 20th July

We are holding our Summer Fair as a community event where pupils, parents, and friends are very welcome to come and join us for fun and games. Our newly extended Early Years Area will also be open for visitors, so please take the opportunity to come and have a look around.

Sponsored Walk—Sunday, 25th June

Don't forget, FoSS have a sponsored walk organized for the Sunday morning. They will be setting off from Blanchland at 10:00am. There are two walks to choose from: an 8-10 mile route (for the enthusiasts!) and a shorter 3-4 mile route for younger children and families. Join us and you'll definitely hit your 10 000 step target! The school also have a walk planned for R-Y4 pupils. This is scheduled to take place during timetable PE lessons on 27.6.17.



Year 4 Leavers' Assembly—Tuesday, 18th July (9:15am)

In order to give our Year 4 leavers a proper 'send off', we will be holding an assembly for pupils, friends and family on the morning of Tuesday, 18th July. Year 4 will share their memories of Slaley First School, along with performing a short play (in French!) and sharing their many talents. Refreshments will be served in the school hall afterwards.



Notes from the Office:

- ⇒ Any absence needs to be communicated to the school office by 9:30am. You can visit, phone or email (details below).
- ⇒ Any changes to home time arrangements also need to be communicated to the school office by lunchtime. Thank you.
- ⇒ Please can you regularly check your Parentmail account for communication from school. Any school closure, due to adverse weather conditions, will be communicated through text.
- ⇒ We would like to remind you that, if prescribed medication needs to be administered at school, an official form must be completed. You can find this form on the school's website, in the Parent Zone, or you can collect one from the office. Without this information, we *can not* administer medication to your child.
- ⇒ School uniform and P.E. Kit available on line through School Trends—link in the Parent Zone of the website.

Tel: 01434 673220 **Email:** admin@slaley.northumberland.school.uk



Dates for your diary:

JUNE

- 13th June—Yr1 Phonics Screening
- 21st June—Multi-skills Festival
- 23rd June—Change Detectives (Corbridge Middle School)
- 25th June—FoSS Sponsored Walk
- 26th June—Swimming Gala
- 28th June—Annual Partnership Festival (Toplink)
- 28th June—Nursery Teddy Bears' Picnic (FoSS)
- 29th June—6pm Transition Evening (R—Yr4)



JULY

- 4th July—Transfer Day
- 5th July—Dobbies Trip (N-Y2)
- 6th July—Sports Day
- 7th July—'Hey Piggy Piggy' - QEHS
- 7th July—FoSS Disco 4—6pm Commemoration Hall
- 14th July—Reports out to parents
- 18th July—Yr4 Leavers' Assembly (9:15—10:15am)
- 20th July—Summer Fair & EYFS open night.
- 21st July—School finishes



SEPTEMBER

- 4th Sept—INSET Day (Staff)
- 5th Sept—School reopens
- 29th Sept—School photographs

OCTOBER

- 19th Oct—School finishes
- 20th Oct—INSET Day (Staff)

NOVEMBER

- Slaley Leek Show
- All dates are on the website calendar.**
- Further information will be sent nearer the time.**

